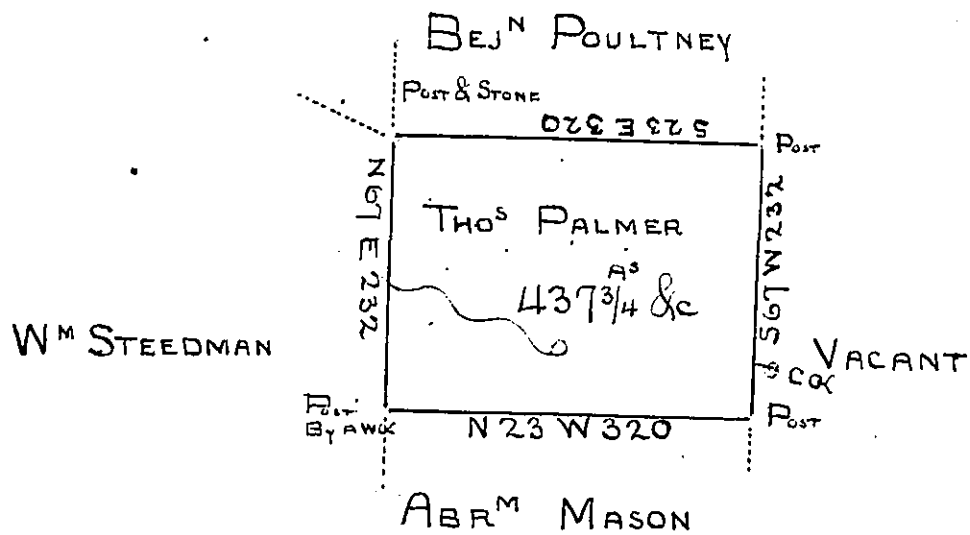


Butler
Luzerne.



Draft of a tract of land Called Situate in the County
 of Luzerne Containing four Hundred and thirty Seven Acres $\frac{3}{4}$ &
 below Surveyed for Tho's Palmer the 26th day of May 1793
 by Virtue of a Warrant dated the 25th day of March 1793
 by Jm Gray
 To Daniel Brodhead Esqr }
 Secy Gen }

IN TESTIMONY that the above is a copy of the original remaining on file in the
 Department of Internal Affairs of Pennsylvania, made con-
 formably to an Act of Assembly approved the 16th day of
 February, 1833, I have hereunto set my Hand and caused
 the Seal of said Department to be affixed at Harrisburg, this

Nineteenth day of July 1876

J. M. Candlish
 Secretary of Internal Affairs